

MICRO CEMENTO



MICROCEMENTO
ELCHE

MICRO-TOPPING
BÉTON CIRÉ MILLIMÉTRIQUE





REALIZACION DEL MICROCEMENTO ELCHE^{® SL}

REALIZATION OF MICRO-TOPPING

* - RÉALISATION DU BÉTON CIRÉ MILLIMÉTRIQUE

ES

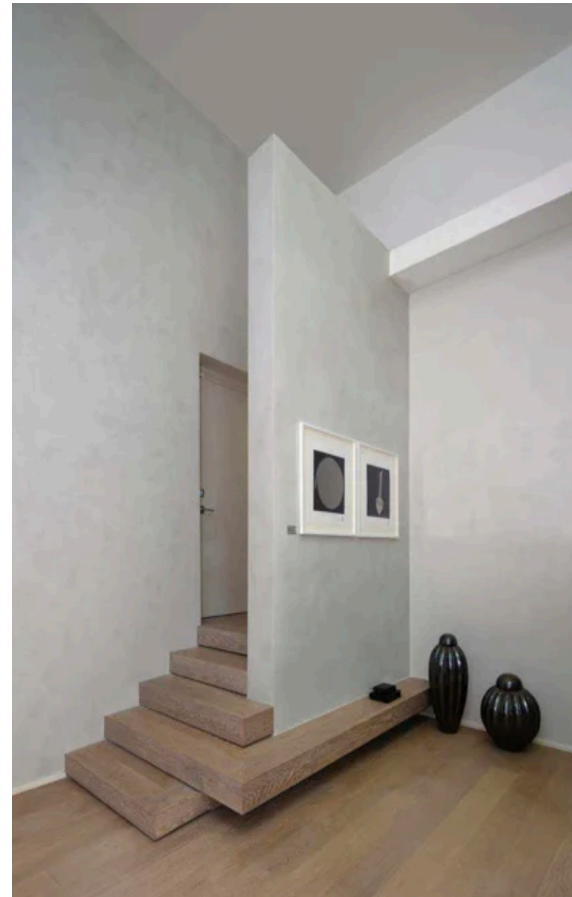
1. La superficie de hormigon o superficie, debe estar pulido y limpia.
2. Dos capas de MICRO CEMENTO **TOP CEMENT BASE** con lijado intermedio y limpieza.
3. Dos capas MICRO CEMENTO **TOP CEMENT** con lijado intermedio y limpieza.
4. Aplicacion de una resina poliuretana de proteccion brillante, mate o satinado .

EN

1. The concrete or tile surface is previously polished.
2. Application of 2 hands of **TOP CEMENT** with intermediate sanding and cleaning.
3. Application of 2 hands of **TOP CEMENT** with intermediate sanding and cleaning.
4. Application of the protective sealer **DECO PU 78** gloss or matt or **DECO PU WB** mate.

FR

1. La surface du béton ou carrelage doit être polie avant tout.
2. Deux couches de **TOP CEMENT** avec ponçage intermédiaire et nettoyage.
3. Deux couches de **TOP CEMENT** avec ponçage intermédiaire et nettoyage.
4. Application de la résine de protection **DECO PU**.



●● MICROCEMENTO TOPCIMENT ●● RENUEVA TU SUPERFICIE EN POCOS MILIMETROS...

ES - Al combinar la esencia con acabados inesperados y la necesidad de cambiar, nace el microcemento TOP CIMENT®. diseñado para adaptarse a diferentes gustos y atmósferas, se propone con una variedad excepcional de estilos y colores, a través del cual todos son libres de comunicar su forma de ser y su personalidad. microcemento TOP CIMENT® se fabrica rápidamente incluso en superficies existentes, con solo 3 mm de espesor.

EN - MICRO-TOPPING RENEWS YOUR SURFACE IN A FEW MILLIMETERS... Micro-topping was born by combining essence, unexpected Finish and the need to change. Thought to fit different tastes and atmospheres, undertakes itself with a wide range of styles and colors through which everyone is free to transmit its way to be and its personality. Micro-topping ISOPLAM® is quick to realize also on existing surfaces in only 3 millimetres of thickness.

FR - BÉTON CIRÉ MILLIMÉTRIQUE RENOUVELLE VOTRE SURFACE AVEC QUELQUE MILLIMÈTRES...

BÉTON CIRÉ MILLIMÉTRIQUE® est né en combinant essence, finitions et la nécessité de changer. Pensé pour s'adapter à tous les goûts et les atmosphères, il est présenté avec une extraordinaire variété de styles et de couleurs, à travers lesquels tout le monde est libre d'exprimer sa personnalité et sa façon d'être. BÉTON CIRÉ MILLIMÉTRIQUE® est facile à mettre en œuvre, même sur les surfaces existantes en seulement 3 millimètres d'épaisseur.



UNLIMITED

Microcemento
bicomponente **¡Nuevo!**



PUREMETAL

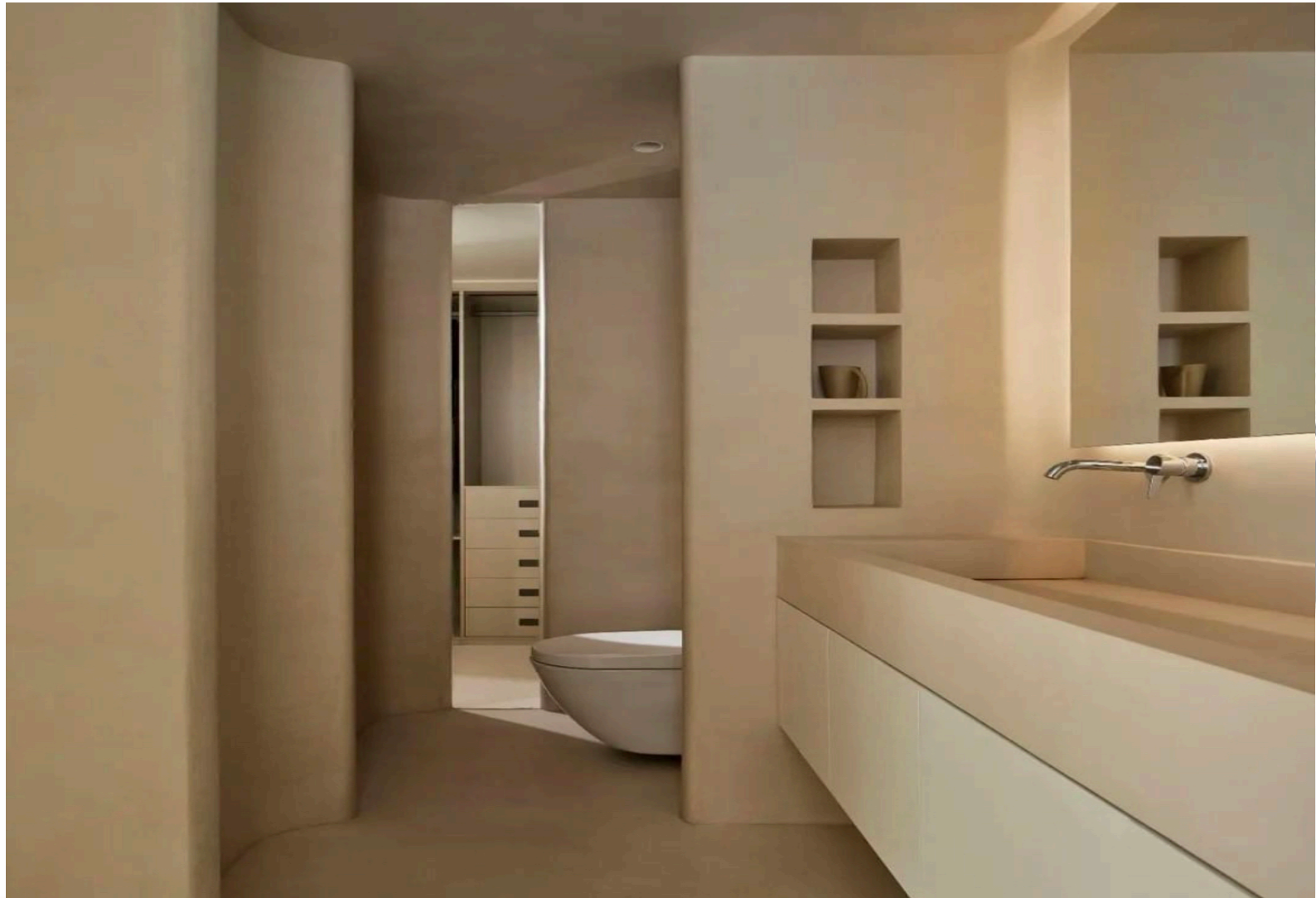
Revestimiento metálico





9









STANDARD

APLICACIÓN PASO POR PASO STEP BY STEP OF APPLICATION

**RESULTADO DE LOS
ACABADOS EN PAREDES**
FINISHES RESULTS IN WALLS

**RESULTADO DE LOS
ACABADOS EN SUELOS**
FINISHES RESULTS IN FLOORS

Paso 1
Colocar la malla sobre la superficie a recubrir.
Aplicar Primacem® Plus/ABS.
Step 1
Place the mesh on the surface to be coated.
Apply Primacem® Plus/ABS.



Paso 1
Colocar la malla sobre la superficie a recubrir.
Aplicar Primacem® Plus/ABS.
Step 1
Place the mesh on the surface to be coated.
Apply Primacem® Plus/ABS.



Paso 2
Aplicar una primera capa de Microbase sin pigmento. Lijar.
Step 2
Apply a first coat of Microbase without pigment. Sand.



Paso 2
Aplicar una primera capa de Microbase sin pigmento. Lijar.
Step 2
Application of the first coat of Microbase without pigment. Sand.



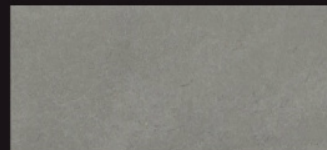
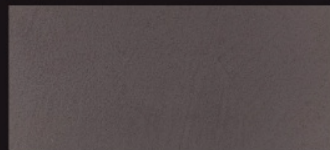
Paso 3*
Aplicar una segunda capa de Microbase con pigmento. Lijar.
Step 3*
Apply a second coat of Microbase with pigment. Sand.



Paso 3*
Aplicar una segunda capa de Microbase con pigmento. Lijar.
Step 3*
Application of the second coat of Microbase with pigment. Sand.



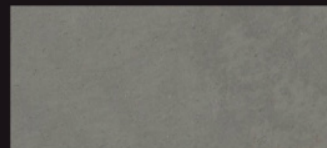
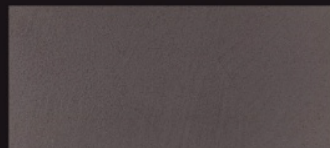
Paso 4
Aplicar una primera capa de Microfino con pigmento. Lijar.
Step 4
Apply a first coat of Microfino with pigment. Sand.



Paso 4
Aplicar una primera capa de Microdeck con pigmento. Lijar.
Step 4
Application of the first coat of Microdeck with pigment. Sand.



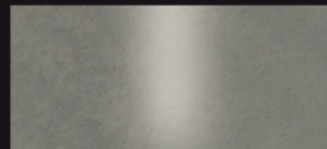
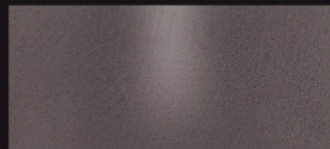
Paso 5
Aplicar una segunda capa de Microfino con pigmento. Lijar.
Step 5
Application of the second coat of Microfino with pigment. Sand.



Paso 5
Aplicar una segunda capa de Microdeck con pigmento. Lijar.
Step 5
Application of the second coat of Microdeck with pigment. Sand.



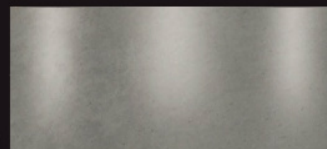
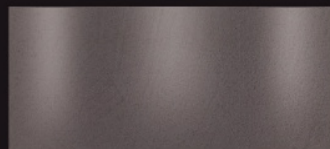
Paso 6
Aplicar mediante rodillo dos capas de Presealer.
Step 6
Apply two coats of Presealer by roller.



Paso 6
Aplicar mediante rodillo dos capas de Presealer.
Step 6
Apply two coats of Presealer by roller.



Paso 7
Aplicar mediante rodillo dos capas de Topsealer®.
Step 7
Apply two coats of Topsealer® by roller.



Paso 7
Aplicar mediante rodillo dos capas de Topsealer®.
Step 7
Apply two coats of Topsealer® by roller.



UNLIMITED

APLICACIÓN PASO POR PASO STEP BY STEP OF APPLICATION

RESULTADO DE LOS
ACABADOS EN PAREDES Y SUELOS
FINISHES RESULTS IN WALLS AND FLOORS

ES

EN

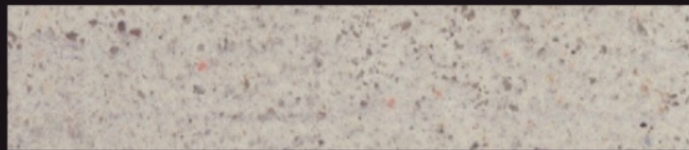
Paso 1
Colocar la malla sobre la
superficie a recubrir.
Aplicar Primacem® Plus/ABS.



Step 1
Place the mesh on the surface
to be coated.
Apply Primacem® Plus/ABS.



Paso 2
Aplicar una primera capa de
Microbase sin pigmento. Lijar.



Step 2
Application of the first coat of
Microbase without pigment.
Sand.



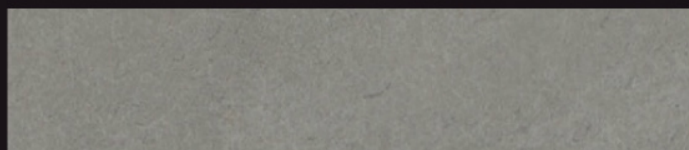
Paso 3
Aplicar una segunda capa de
Microbase con pigmento. Lijar.



Step 3
Application of the second coat of
Microbase with pigment. Sand.



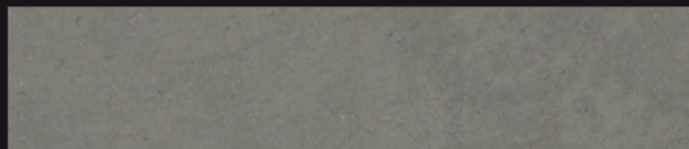
Step 4
Aplicar una primera capa de
Microdeck con pigmento. Lijar.



Step 4
Application of the first coat of
Microdeck with pigment. Sand.



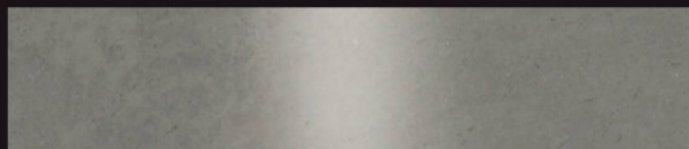
Step 5
Aplicar una segunda capa de
Microdeck con pigmento. Lijar.



Step 5
Application of the second coat
of Microdeck with pigment.
Sand.



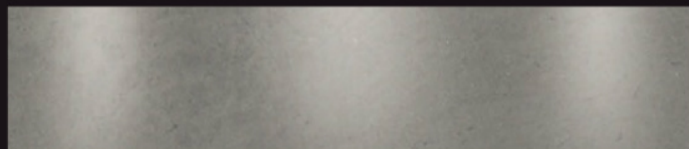
Paso 6
Aplicar mediante rodillo dos
capas de Presealer.



Step 6
Apply two coats of Presealer
by roller.



Paso 7
Aplicar mediante rodillo dos
capas de Topsealer®.



Step 7
Apply two coats of Topsealer®
by roller.



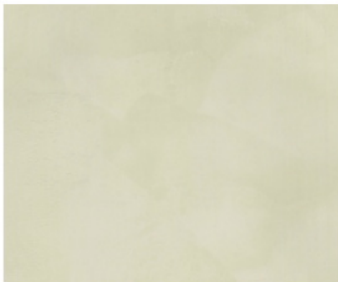
STANDARD UNLIMITED EVOLUTION

CARTA DE COLORES / COLOUR CHART

Blanco



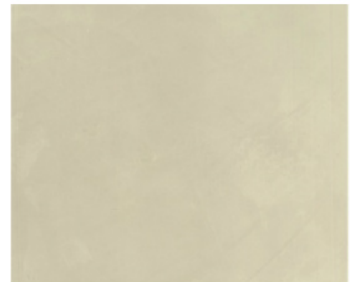
Perla



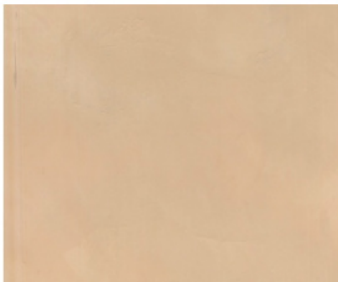
Blanco Roto



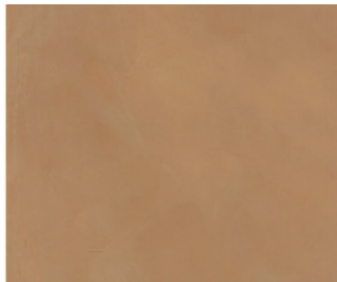
Marfil



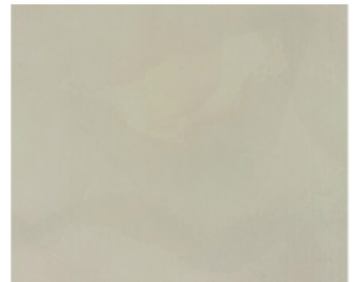
Sáhara



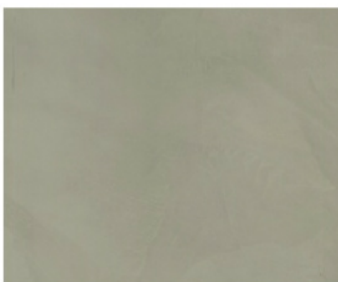
Café



Titanio



Plata



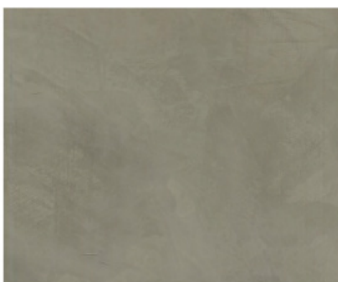
Himalaya



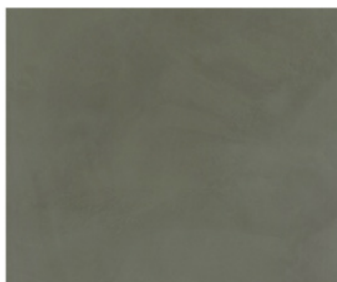
Cemento



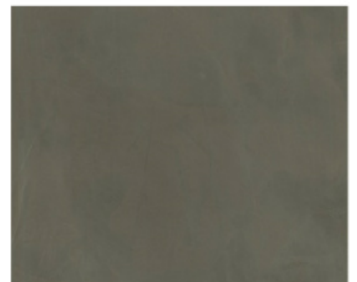
Acero



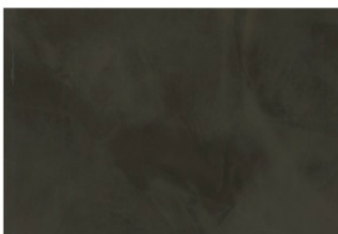
Shale Grey



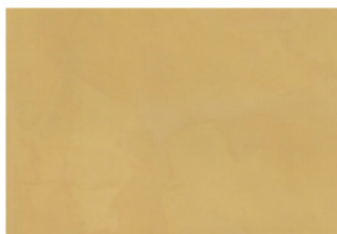
Pizarra



Negro



Mojave



Kalahari



The colours shown are simulations of the 'topprint' colours. For digital reasons, the results of these samples may not match their application on a surface. Therefore, before use, it is advisable to check the real sample catalogue for a more accurate preview.

es mostrados son simulaciones de los colores 'topprint'. Por motivos digitales, es posible que los resultados de estos colores no coincidan con su aplicación en una superficie. Por lo tanto, se recomienda consultar los catálogos de muestras reales para obtener una preview más precisa.

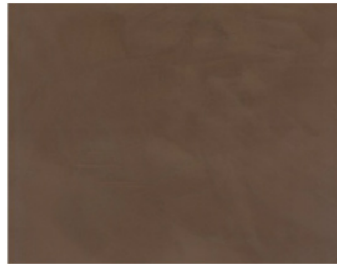
STANDARD UNLIMITED EVOLUTION

CARTA DE COLORES / COLOUR CHART

Cobre



Wengué



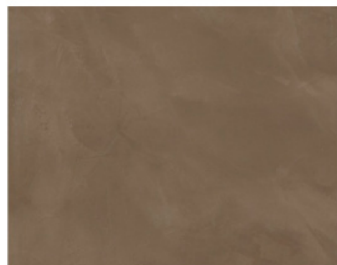
Arena



Desert Tan



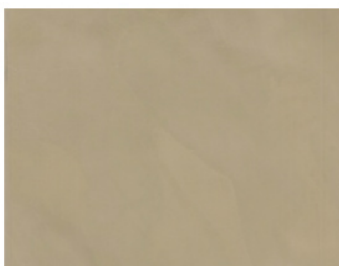
Marrón



Plomo



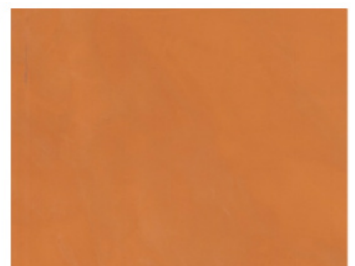
Piedra Paris



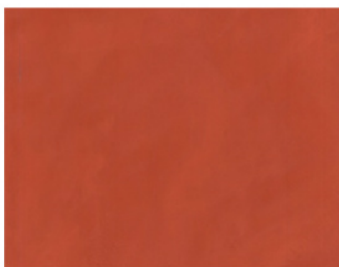
Azafrán



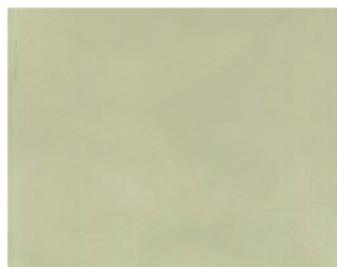
Calabaza



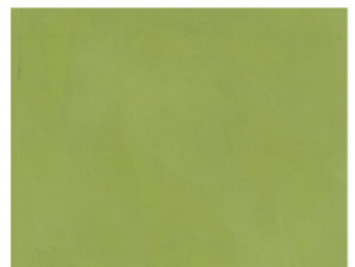
Carmín



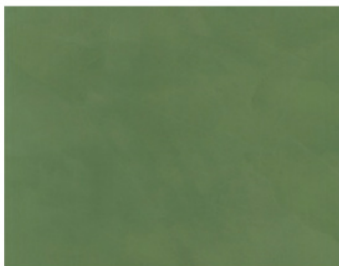
Liquen



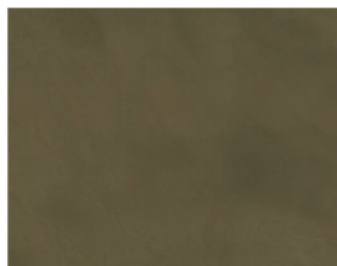
Kiwi



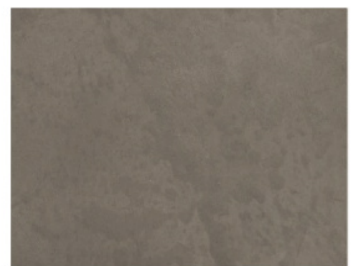
Selva



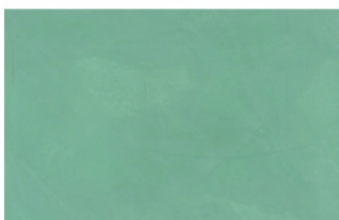
Topo



French Grey



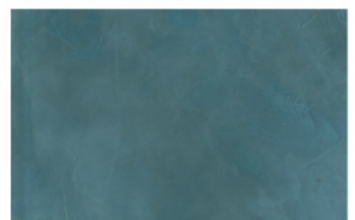
Jade



Azul Profundo



Azul Noche




The color is shown as the colors of the manufacturer's color chart. For digital reasons, the results of these samples may not match their application on a surface. Therefore, before use, it is advised to check the real sample catalogue for a more accurate picture.

El resultado se muestra en las fichas de colores de la muestra. Por motivos digitales, es posible que los resultados de esta muestra no coincidan con la aplicación en una superficie. Por ello, antes de utilizarlo, se recomienda consultar los catálogos de muestras reales para obtener una representación más aproximada.



ATLANTIC
CREACIONES ÚNICAS
PARA ESPACIOS
SUMERGIDOS



**EFECTO
QUARTZ**
LA BELLEZA Y
ELEGANCIA DE LOS
ACABADOS
INIMITABLES



STANDARD
LA VERSATILIDAD DE
LAS CREACIONES
INFINITAS

**ÍNDICE
DE SISTEMAS**

**SYSTEM
INDEX**

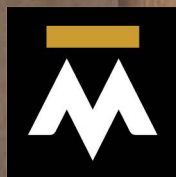


UNLIMITED
A LA VANGUARDIA DE
LA TÉCNICA



PUREMETAL
LA REVOLUCIÓN DE
LOS REVESTIMIENTOS
DECORATIVOS





MICROCEMENTO
ELCHE

Vicente Pérez Bellot 15
03205 Elche - Alicante
640 28 40 03 / 965 06 58 74
info@microcementoelche.com
www.microcementoelche.com