



DATAMARK



PN: 12345-ABCD
MD: 12.DEC.2021
SN: ABC0123005



Datamark Systems S.L.

C/ Astintze 6 - P.Industrial Inbisa

Nave C1, N°38

48160 / Derio / Spain

Tel. +34 944 758 269

www.datamark-systems.com

info@datamar-systems.com

DATAMARK MARKING SYSTEMS

POWER TO MARK



DATAMARK®

The leading brand in industrial marking

At DATAMARK we are specialists in the design and manufacture of industrial marking machines for the permanent identification and traceability of industrial parts and equipment.

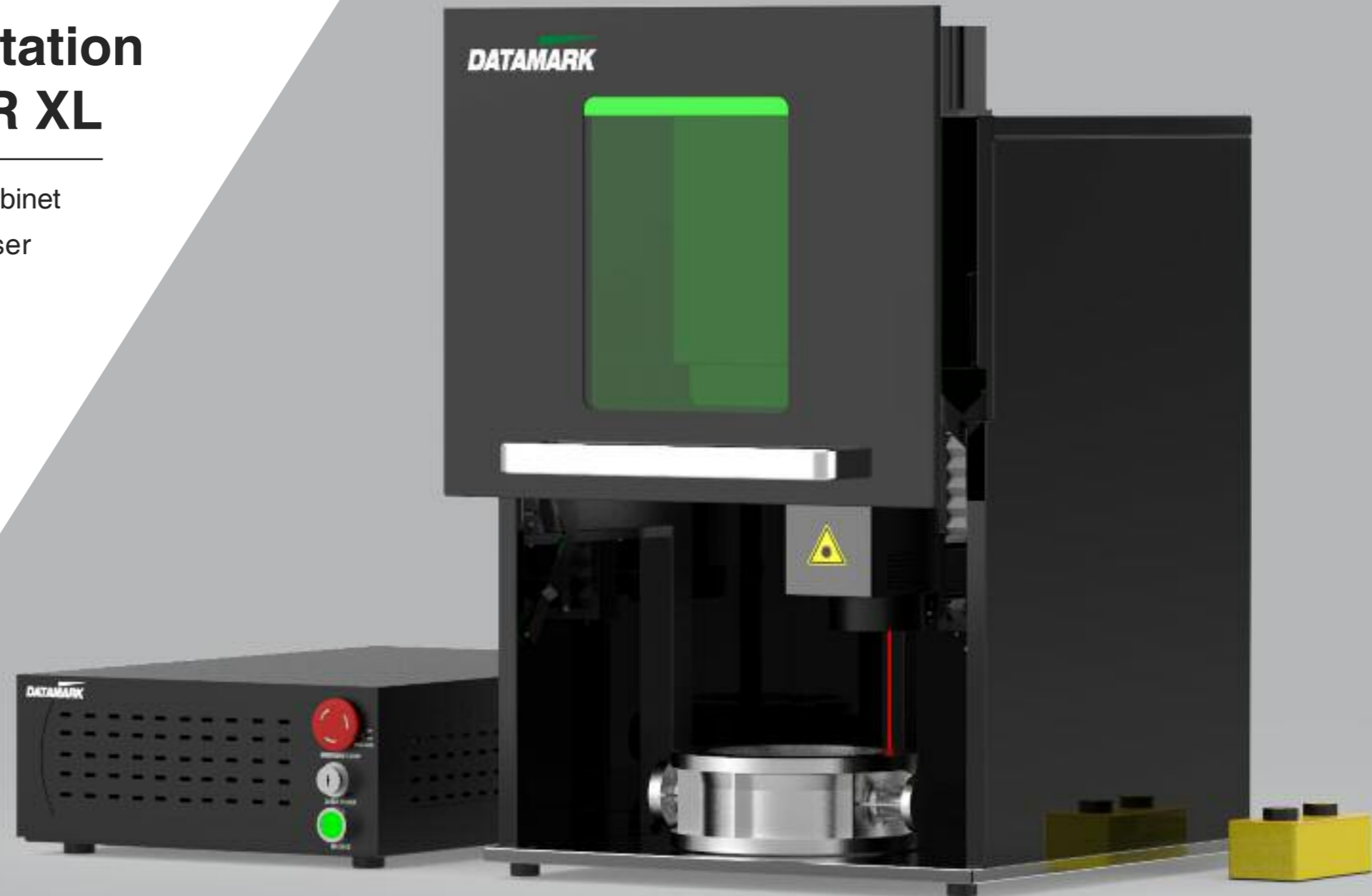
Our laser and dot peen marking systems are highly innovative and offer important advantages to our customers:


- **Superior machine performance.**
- **Advanced marking capabilities.**
- **Unmatched ease of handling.**
- **Minmised operating costs.**
- **Competitive prices.**
- **Worldwide technical support.**

Marking & Engraving Workstation FIBER LASER XL

The FIBER LASER XL benchtop marking laser with a safety cabinet offers users easy and totally safe operation during the laser marking process..

Its innovative design allows marking parts of practically any geometry and dimension, both flat and cylindrical, being the perfect solution in a wide variety of applications; for marking of machined parts, engraving of identification plates, marking of tools, etc.



A black industrial laser marking machine is shown in a studio setting. The machine has a vertical column on the left and a horizontal arm extending to the right. A laser head is mounted on the arm, and a thin red laser line is visible, pointing down at a row of seven small, cylindrical metal parts on a worktable. The machine is sleek and modern, with a yellow laser warning symbol on the side of the laser head. The background is a plain, light gray.

FIBER LASER PRO

Laser power: 20W, 30W, 50W

Industrial grade laser marker FIBER LASER PRO

The FIBER LASER PRO laser marking and engraving machine offers the highest features and superior performance for the most demanding marking applications in intensive manufacturing processes and industrial automation.

The FIBER LASER PRO laser marking machine is available with different power levels to obtain exceptional marking results in very fast processing times, being a perfect solution for automated marking applications of all types of parts and materials; metals, alloys and a wide variety of plastics.

Compact laser marker FIBER LASER ML-200

The FIBER LASER ML-200 laser marking machine is a perfect solution to easily access the most efficient laser marking and engraving technology; precise, clean and profitable.

The FIBER LASER ML-200 is an open marking system with an ultra-compact design, versatile and easy to install in any workspace. Ideal for marking machined parts, engraving identification plates, marking tools, components, etc...



FIBER LASER ML-200

Laser power: 20W

DATAMARK MP-50 MOBILE

Marking window: 50 x 30 mm
(1.97" x 1.18")



Wireless dot peen marker MP-50 MOBILE

The MP-50 MOBILE marker is the first portable cordless dot peen marker that is easily programmed from any standard device; smartphones, tablets and PCs.

The marker is 100% portable, since it works with a high-performance rechargeable battery and does not require cables or fragile screens for its programming, being extremely light and easy to use.

Its robust metal construction is ideal for working in industrial and outdoor environments, offering marking power which is superior to any other portable marker on the market.

Wireless dot peen marker MP-100 MOBILE

The MP-100 MOBILE allows for marking all kinds of industrial parts and materials of any shape and size, both flat and cylindrical; being ideal for the marking of tubes, profiles, vehicle frames, identification plates, machined parts, etc.

The control and programming of the marking is done very easily through the DATAMOBILE™ software for mobile devices; smartphone, tablet and PC, with Android™, Apple™ IOS and Windows™ operating system

DATAMARK MP-100 MOBILE
Marking window: 100 x 30 mm
(3.94" x 1.18")



DATAMARK MP-150 MOBILE
Marking window: 150 x 30 mm
(5.91" x 1.18")



Wireless dot peen marker MP-150 MOBILE

The MP-150 MOBILE portable marking machine has a superior marking area of 150 x 30 mm (5.91" x 1.18"), ideal for those applications that require marking large texts and numbering; marking of VIN numbers on chassis and frames, marking of tubes, profiles, etc.

The possibilities of the marking machine are practically endless, combining great ease of use, high marking performance and a high-performance li-ion battery offering more than 3 hours of continuous operation.

Pneumatic benchtop marking machine

EASYMARKER™

The EASYMARKER™ micropercussion marking machine has been designed to mark all types of parts quickly and easily, offering an unbeatable price-performance ratio, ideal for marking machined parts and variable format identification plates, among many other applications.

The EASYMARKER™ software allows you to easily design and transmit marking messages to the marker from any device; Smartphone, Tablet and PC, via wireless WiFi connection.

DATAMARK EASYMARKER

Marking area: 100 x 70 mm
(3.94" x 2.75")



Benchtop electromagnetic marker MP-120 ADVANCED

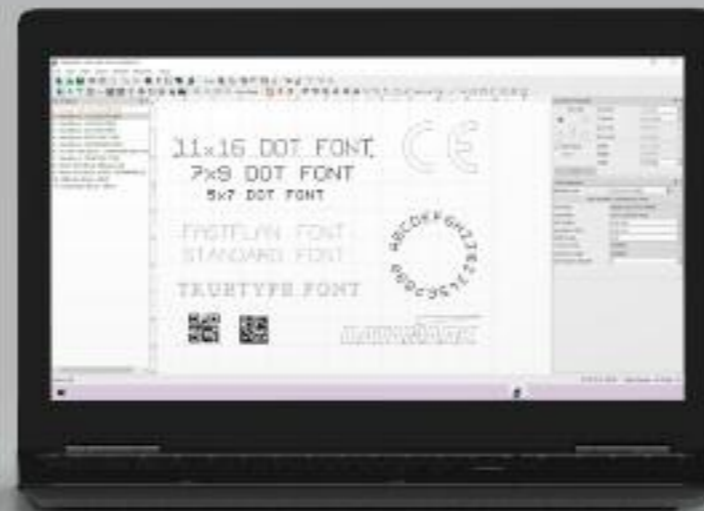
The MP-120 ADVANCED dot peen marking machine is fast, reliable and very easy to use. It is perfect for marking all types of variable format metal parts and identification plates.

The control and programming of the marking is easily done through the included PC software; for marking texts, dates, numbers, Datamatrix, QR-Code codes, logos, etc.

The marking machine has LAN/Ethernet network communication and wireless WI-Fi connection as standard.

DATAMARK MP-120 ADVANCED

Marking area: 120 x 100 mm
(4.72" x 3.93")



Benchtop electromagnetic marker POWERMARKER™

The POWERMARKER™ dot peen marker offers the highest performance and total precision for automatic marking of parts.

Its motorised Z-axis system with AUTOSENSE technology allows the marking position to be programmed and automatically adjusted without intervention or the need for manual adjustments by the user.

This powerful marking machine is ideal for marking Datamatrix codes for part identification in the Aeronautical and Automotive sectors.



DATAMARK POWERMARKER™
Marking area: 120 x 100 mm
(4.72" x 3.93")



COLUMN & BASE

NAMEPLATES FIXTURE

Make it a COMBO

Maximise your flexibility by pairing your MOBILE marker with our optional column and base mounting system. A “combo” system in benchtop configuration allows for precise marking of smaller machined parts and metal data plates.

Nameplate Marking Fixture

Mounting plate for accurate marking of metal tags, data plates, name plates, etc.

Securely attaches to the column and base or the benchtop unit.